

MODULAR SISTEM - KLASIČNE JEDINICE ZA PUNKTOVANJE 4050 20 KVA












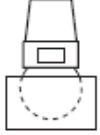
- Klasična jedinica za tačkasto zavarivanje – punktovanje sa procesorom TE93.
- Podesiva dužina ruku do 320 mm.
- Cr-Cu nosači elektroda sa dugim radnim vekom.
- Podesiv zamah – hod elektroda.
- Vodom hlađeni trafo sa epoksi smolom kao zaštitom.
- Vodom hlađene ruke , elektrode , nosači elektrode.
- Sinhronizovani SCR prekidač.
- Bezuljni pneumatski cilindar.

TEHNIČKE KARAKTERISTIKE za 4050

ITEM		4050
Nominalna snaga na 50%	kVA	20
MAksimalna snaga	kVA	51
Struja kratkog spoja	kA	15.5
MAksimalna struja za čelik - lim	kA	12.4
Termička struja 100%	A	3500
Sekundarni napon praznog hoda	V	4
Napojni napon 50Hz *	V	400
Presek kabla L=30 m	mm ²	10
Osigurači	A	40
Min. dubina ruku	mm	180
Max. sila elektroda (6 bar)	daN	320
Hod elektroda	mm	5-28
Max. dubina ruku	mm	500

Max. sila elektroda (6 bar)	daN	130
Hod elektroda	mm	5-74
Razmak između ruku	mm	220
Prečnik ruku	mm	40
Prečnik nosača elektroda	mm	22
Standardne elektrode prečnika	mm	14.8
Komprimovani vazduh	bar	1-6
Vazduh za 1000 punktova (6 bar)		
min. dubina ruku - hod 20 mm	Nm ³	2.5
max. hod	Nm ³	3
Crevo za vazduh	mm	8
Protok rashladnog sredstva	l/min	4
Nivo buke	dB(A)	< 70
Merni uslovi		
Radni hod	mm	20
Vreme zavarivanja	cycles	26
Struja zavarivanja	kA	9
frekvencija u punktovi/min		10
Neto težina (približno)	kg	88

VRHOVI ELEKTRODA

Ø 14.8 mm	-	-	-	3620 l	3621 l	3622 l	3623 l	3624 l	3625 n
Ø 18 mm	4717 l	4718 l	4719 l	4720 l	4721 l	4722 l	4723 l	4724 l	4725 n
Ø 19.05 mm	-	-	-	8701 l	8703 l	8705 l	8706 l	8702 l	-
									

CENA V.P UREĐAJA 4050

4050	Rocker arm welding unit 20kVA, with control unit TE93 and built-in SCR. Adjustable arms length from 180 to 500 mm. Equipped with supply cable L=4m and control cable item 4076.	€ 3.590,00
-------------	---	------------

ALATISTHERM D.O.O

Koče Kapetana 25

35230 Čuprija, Srbija

Tel/fax : + 381 (0) 35 8471- 196

Mob 1 : + 381 (0) 65 2771- 802

Mob 2 : + 381 (0) 65 8410- 651

office@alatistherm.in.rs

office@alatistherm.co.rs

CENA V.P ELEKTRODA za 4050

4564	Brass reduced-size arm with electrode holder, $\varnothing=65$, D=40, L ₁ =300, L=380mm (for item 4050 only)	€ 252,00
4565	Brass reduced-size arm with front electrode, $\varnothing=50$, D=40, L ₁ =300, L=380 mm. Supplied with electrode-holder item 4726 and electrode item 4727 (for item 4050 only)	€ 296,00
4726	Electrode-holder for reduced-sized arm item 4565 with electrode item 4727	€ 112,00
4727	Offset electrode for item 4726 (for reduced size arm item 4565)	€ 7,00
4729	Straight electrode for item 4726 (for reduced size arm item 4565)	€ 6,50
3620	Straight electrodes - taper 14,8 (a pair)	€ 18,00
3621	Offset electrodes - taper 14,8 (a pair)	€ 19,00
3622	Angled electrodes - taper 14,8 (a pair)	€ 25,50
3623	Bent electrodes - taper 14,8 (a pair)	€ 43,00
3624	Flat electrodes - taper 14,8 (a pair)	€ 19,00
3625	Swivel electrode diam. 30 - taper 14,8	€ 48,50
4717	Pair of flat "long" electrodes (for electrode-holder 4073)	€ 41,00
4718	Pair of offset "long" electrodes (for electrode-holder 4073)	€ 33,50
4719	Pair of straight "long" electrodes (for electrode-holder 4073)	€ 43,50
4720	Pair of straight electrodes (for electrode-holder 4072)	€ 21,00
4721	Pair of offset electrodes (for electrode-holder 4072)	€ 33,50
4722	Pair of angled electrodes (for electrode-holder 4072)	€ 29,00
4723	Pair of bent electrodes (for electrode-holder 4072)	€ 92,00
4724	Pair of flat electrodes (for electrode-holder 4072)	€ 40,00
4725	Swivel electrode (for electrode-holder 4072)	€ 46,00
8701	Straight electrodes (pair)	€ 34,00
8702	Flat electrodes (pair)	€ 60,00
8703	Offset electrodes (pair)	€ 48,00
8705	Angled electrodes with offset tip (pair)	€ 48,00
8706	Bent electrodes (pair)	€ 113,00
4021	Pair of electrode-holders (for 8701)	€ 168,00

ALATISTHERM D.O.O

Koče Kapetana 25

35230 Čuprija, Srbija

Tel/fax : + 381 (0) 35 8471- 196

Mob 1 : + 381 (0) 65 2771- 802

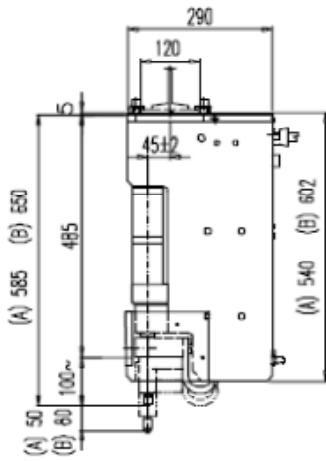
Mob 2 : + 381 (0) 65 8410- 651

office@alatistherm.in.rs

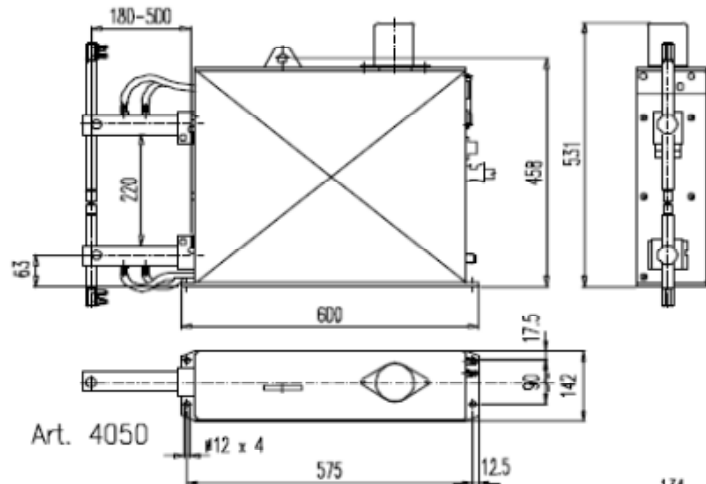
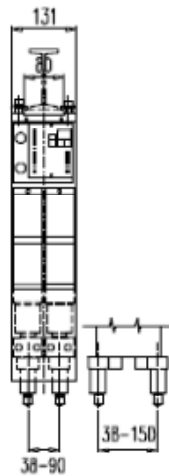
office@alatistherm.co.rs

www.alatistherm.co.rs

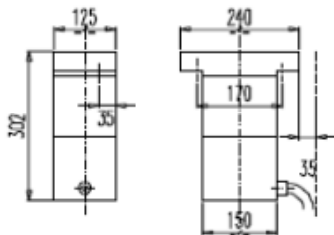
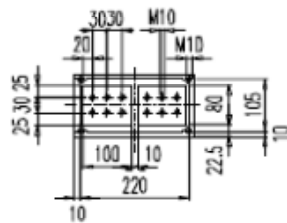
UGRADNE MERE UREĐAJA 4050



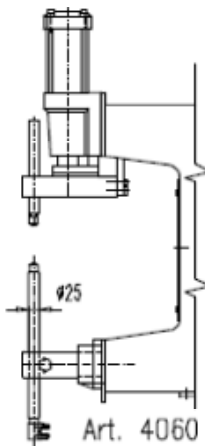
Art. 4040 (A)
Art. 4042 (B)



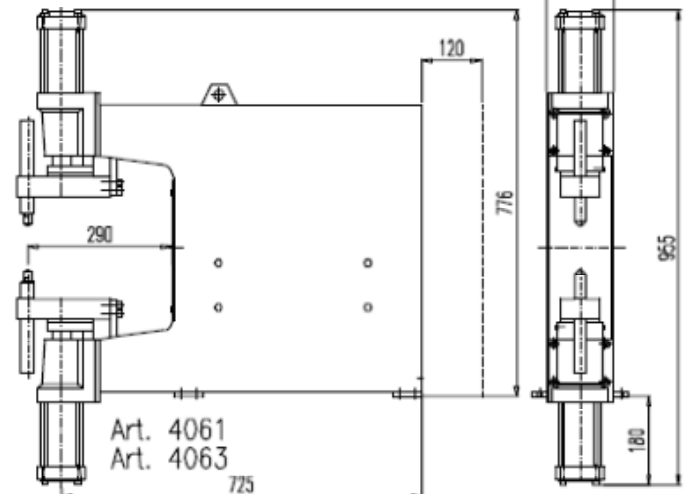
Art. 4050



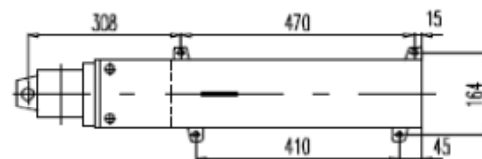
Art. 4044



Art. 4060
Art. 4062



Art. 4061
Art. 4063



ALATISTHERM D.O.O

Koče Kapetana 25

35230 Čuprija, Srbija

Tel/fax : + 381 (0) 35 8471- 196

Mob 1 : + 381 (0) 65 2771- 802

Mob 2 : + 381 (0) 65 8410- 651

office@alattistherm.in.rs

office@alattistherm.co.rs

www.alattistherm.co.rs